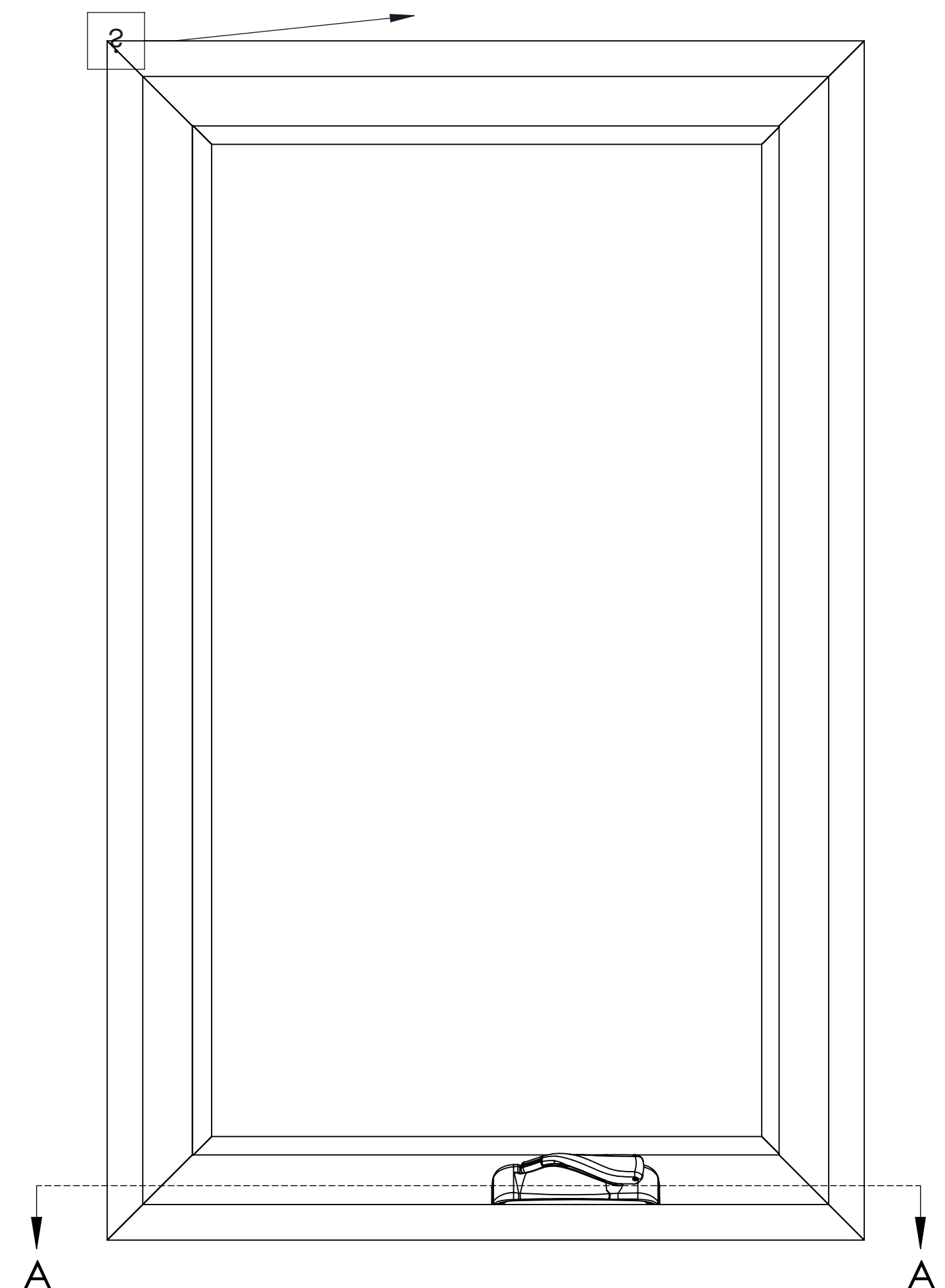
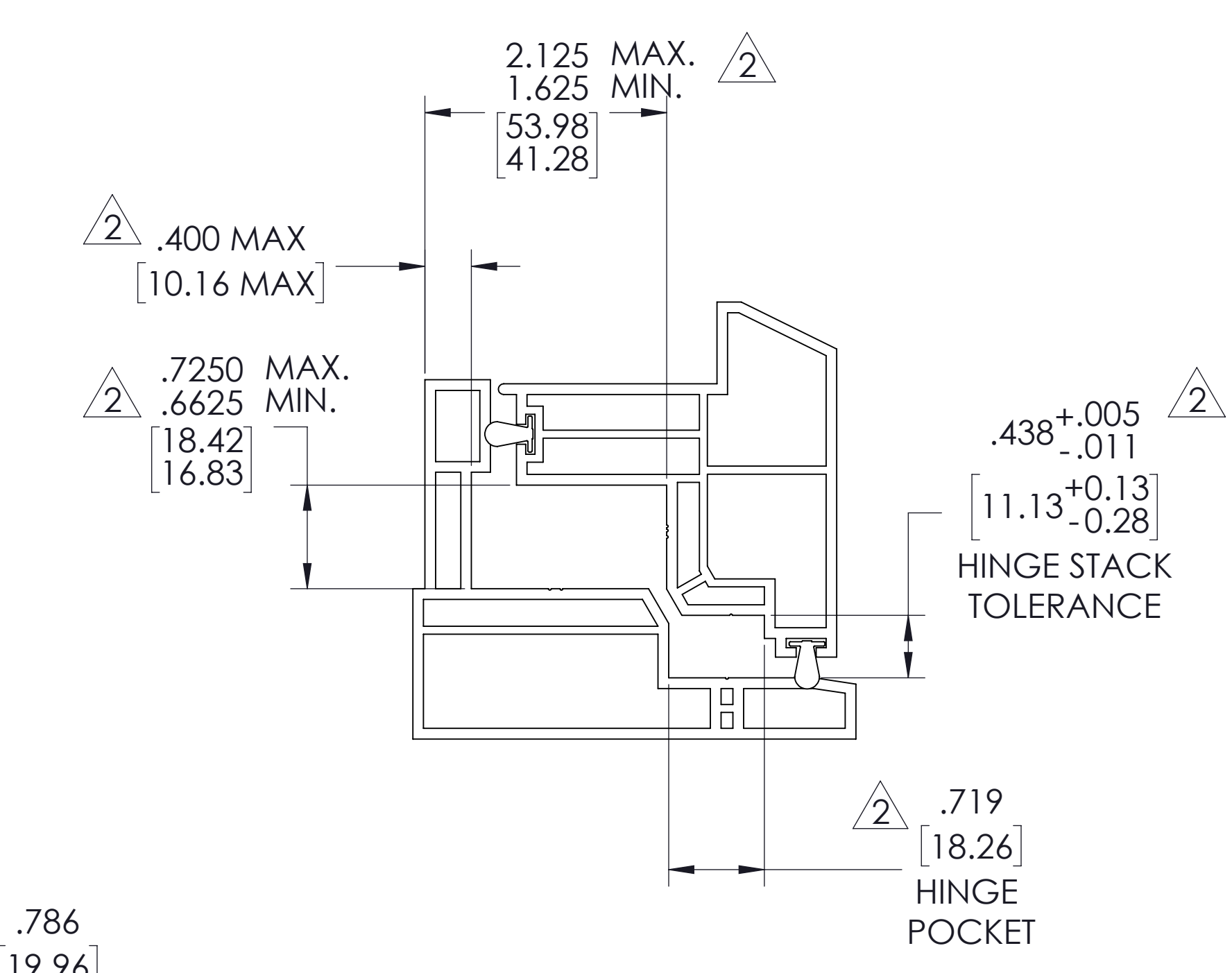
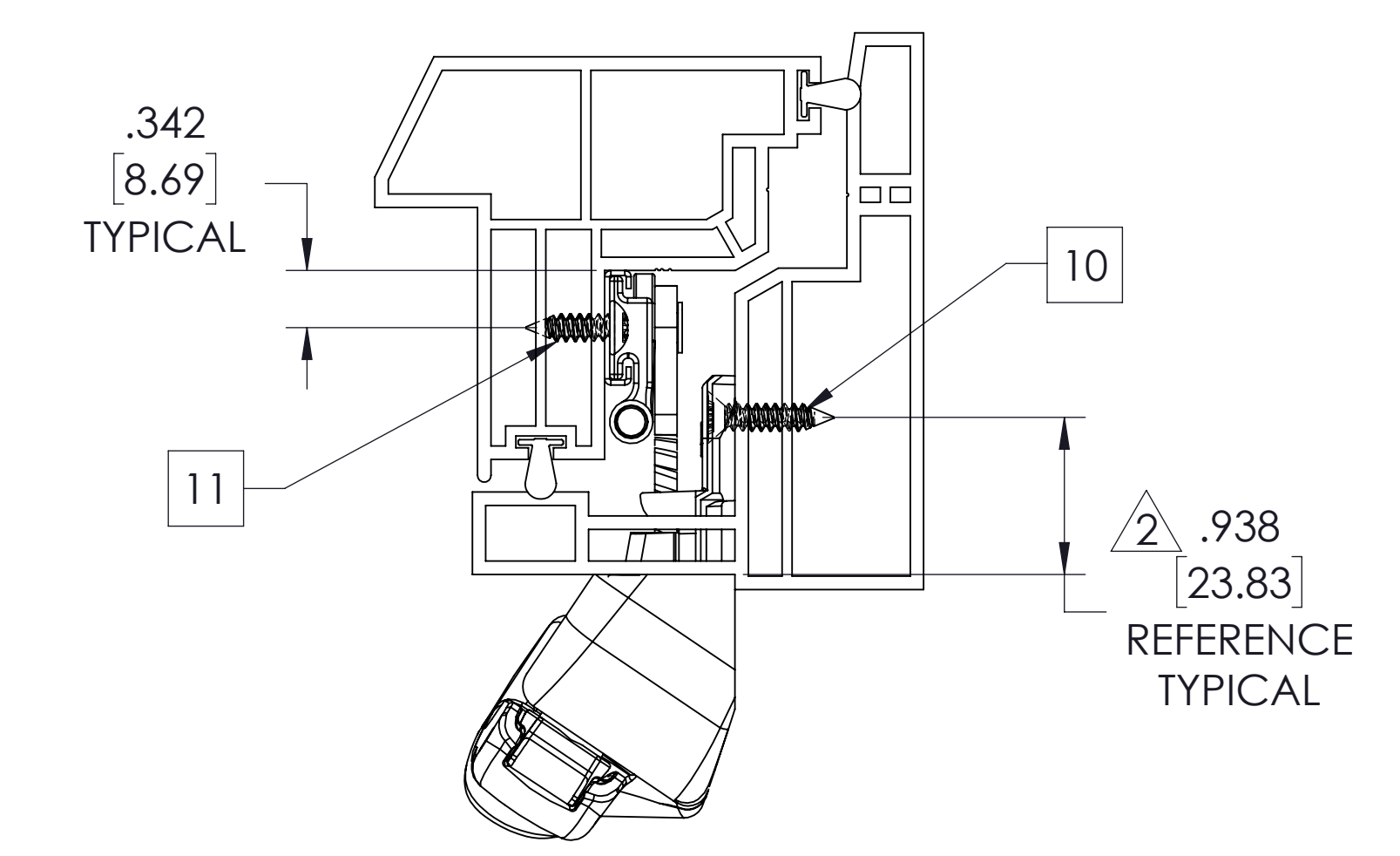
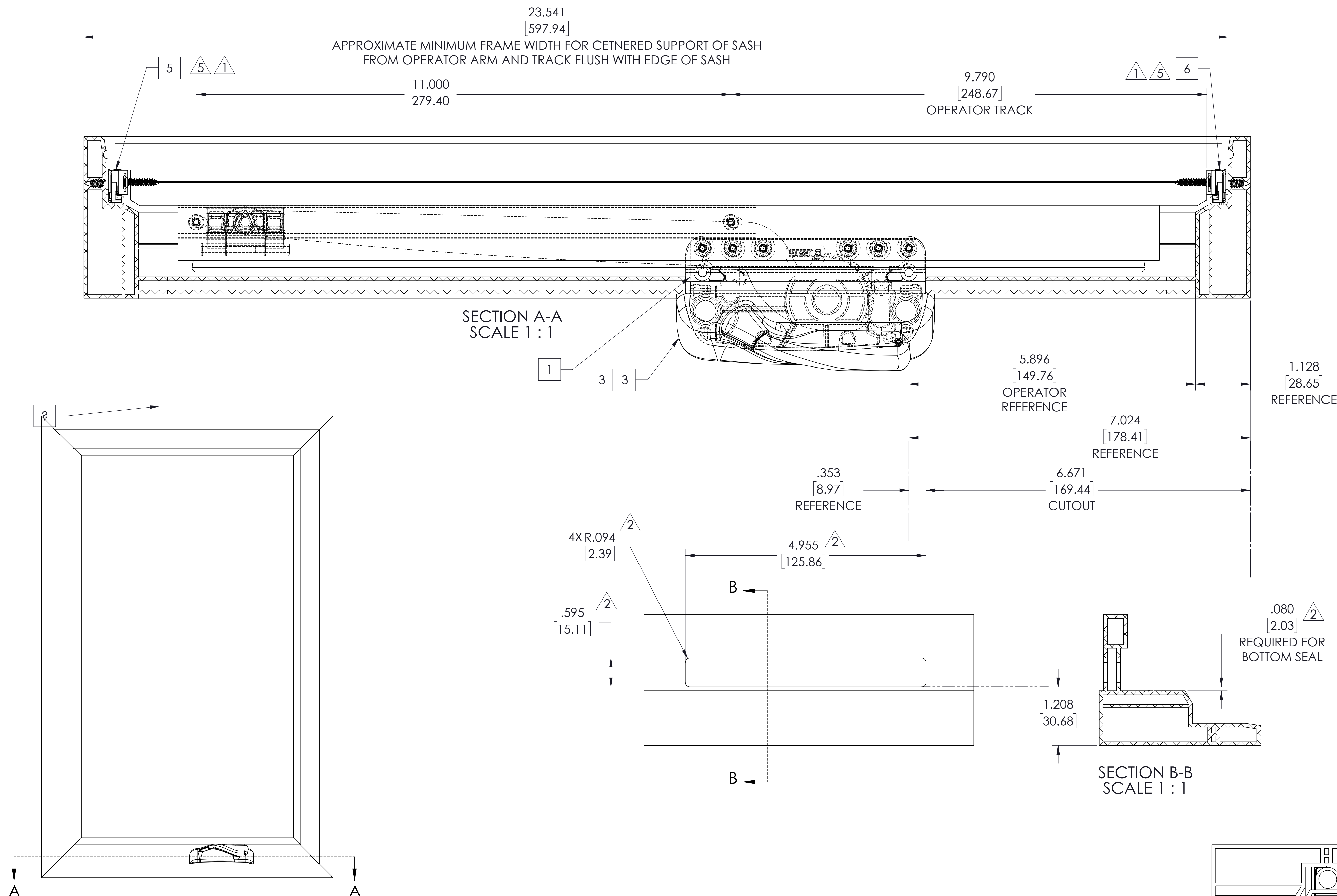


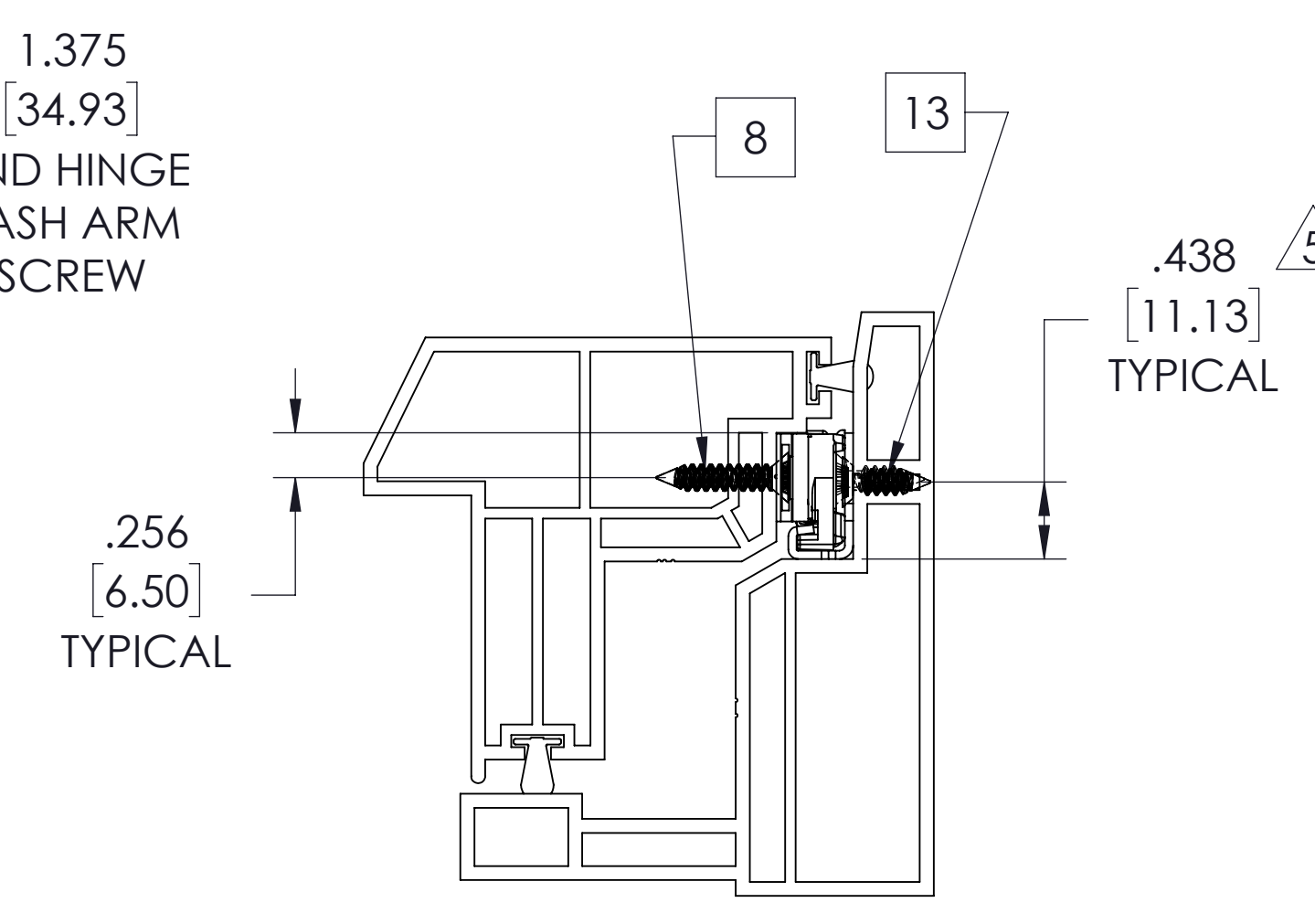
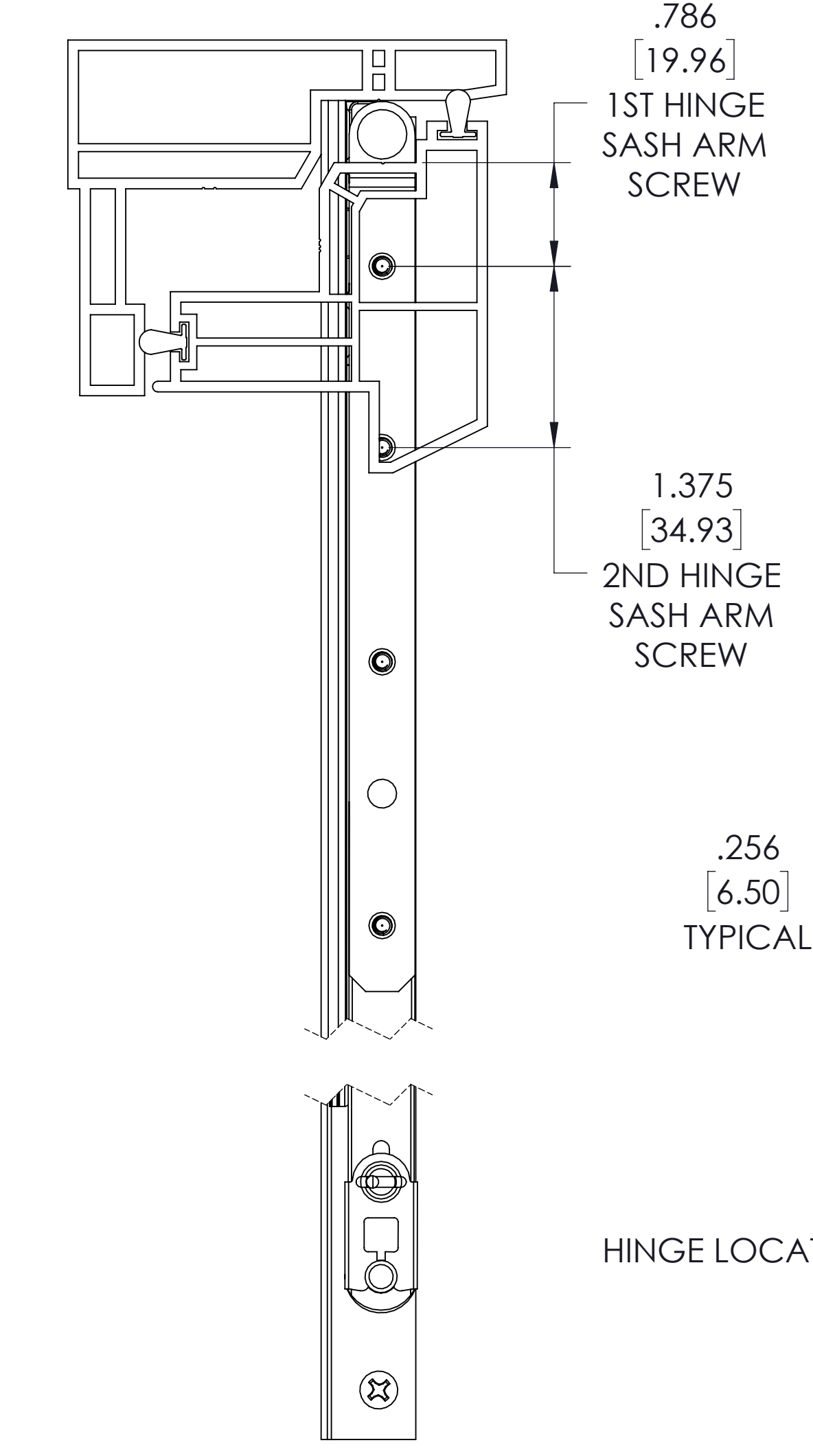
NO.	REV.	DATE	BY
1	CREATED	10/26/2021	MDN



ITEM NO.	PART NUMBER	DESCRIPTION	QTY.
1	52.14.00.211	OPER. ENCORE LH S SA PIV SHOE	1
2	32658	GASKET	1
3	12614	HANDLE AND COVER ASSEMBLY	1
4	31323	A = 11.000 B = 11.875	1
5	SEE CHART	HGE AWN RH ASSEMBLY	1
6	SEE CHART	HGE AWN LH ASSEMBLY	1
7	24309	HINGE STOP	2
8	19105	SCREW 7X3/4 PH FH SMS SS18-8	8
9	19070	SCREW 7X1/2 PH FH SMS SS18-8	10
10	19218.92	SCREW 8X3/4 PH FH SMS YZP	6
11	19567	SCREW 8X3/4 PH PH SMS SS18-8	2
12	Q3751270	Q-LON BULB SEAL	

HINGE		RECOMMENDED SASH HEIGHT	RECOMMENDED MAXIMUM COUNTERBALANCE D SASH WEIGHT	HINGE LENGTH	SCREWS PER HINGE
STEEL	ST. STL.				
13.13	13.43	10.0-14.0 (254.0MM-355.6MM)	7 LBS (3.2 KG)	10.0 (254.0MM)	7
13.14	13.44	14.0-19.0 (355.6MM-482.6MM)	20 LBS (9.1 KG)	14.0 (355.6MM)	8
13.15	13.42	19.0-26.0 (462.6MM-660.4MM)	38 LBS (17.3 KG)	18.0 (457.2MM)	9
13.16	13.45	26.0-34.0 (660.4MM-863.6MM)	50 LBS (22.7 KG)	22.0 (558.8MM)	10
13.17	13.46	34.0-48.0 (863.6MM-1219.2MM)	61 LBS (27.7 KG)	26.0 (660.4MM)	12

PLEASE USE CHART ABOVE FOR AWNING HINGE SELECTION. RECOMMENDED SASH WEIGHTS AND HEIGHTS ARE FOR COUNTER BALANCE FEATURE ONLY. A PAIR OF HINGES HAVE A 250LB CAPACITY. THE TALLER AND HEAVIER A SASH WEIGHT IS THE MORE SASH CHATTER WILL BE PRESENT IN THE OPERATOR ARMS.



- NOTE:
- WARNING! ONLY 13 SERIES AWNING HINGES ARE TO BE USED IN AWNING APPLICATIONS. FAILURE TO USE AN AWNING HINGE CAN RESULT IN SERIOUS WINDOW DAMAGE AND/OR PERSONAL INJURY. REFERENCE TECH NOTE #2 FOR COMPLETE INFORMATION. IT IS IMPORTANT THE HINGE AND SASH HEIGHT BE PROPERLY MATCHED TO ENSURE MAXIMUM OPERATOR EFFICIENCY AND AVOID SASH CHATTER.
 - WHEN USING THE 13.17 HINGE, HARDWARE CONFIGURATION MAY ACHIEVE:
 - MAXIMUM WINDOW SIZE OF 60"W X 42"H (RESIDENTIAL)
 - 61LB SASH PERMITTED FOR BALANCED AWNING OPERATION
 - CHECK WITH EXTRUDER FOR PROFILE PERFORMANCE DATA.
 - HOLD THESE DIMENSIONS AS CLOSE TO THEIR MINIMUM AS MANUFACTURING TOLERANCES ALLOW.
 - MOUNTING SCREWS FOR ALL HARDWARE SHOULD PASS THRU TWO PVC WALLS OR A SINGLE WALL WITH AN INTERIOR METAL INSERT.
 - IT IS RECOMMENDED TO USE TWO LOCKS IN AN AWNING APPLICATION.
 - WARNING! IT IS RECOMMENDED TO INSTALL HINGE STOP 24309 IN EACH HINGE TRACK FOR SAFETY.
 - WARNING! SHIPPING BLOCK 24784 IS RECOMMENDED IN EACH WINDOW ASSEMBLY. REFERENCE TECH NOTE #13 FOR CORRECT INSTALLATION OF SHIPPING BLOCKS.
 - WARNING! ONLY TRAINED PROFESSIONALS SHOULD DISCONNECT HARDWARE TO SERVICE WINDOWS. FAILURE TO DO SO COULD CAUSE SERIOUS WINDOW DAMAGE AND/OR PERSONAL INJURY.
 - REFERENCE TECH NOTE #7 AND 9 FOR MOUNTING SCREW COMPATIBILITY AND CORROSION INFORMATION.
 - REFERENCE TECH NOTE #8 FOR PROPER CARE OF HARDWARE.
 - SEE TECH NOTE #14 FOR PROPER INSTALLATION OF AN OPERATOR COVER AND NESTED FOLDING HANDLE.
 - SEE AMESBURYTRUTH HARDWARE CATALOG FOR FURTHER INFORMATION ON APPLICATION OF ENCORE COMPONENTS.
 - ALL DIMENSIONS ARE AFTER WELD.

TRUTH HARDWARE MAKES NO WARRANTY OR REPRESENTATION OF ANY KIND, EXPRESS OR IMPLIED, WITH RESPECT TO QUALITY, CONTENT, FORM, PERFORMANCE, FITNESS FOR PURPOSE, MERCHANTABILITY OR OTHERWISE OF THE APPLICATION DRAWINGS PROVIDED. THESE DRAWINGS ARE USED AT THE RECIPIENT'S OWN RISK AND TRUTH HARDWARE HAS AND SHALL HAVE NO RESPONSIBILITY FOR RECIPIENTS OR ANY THIRD PARTY'S USE OF THESE DRAWINGS OR ANY OF THE INFORMATION CONTAINED THEREIN. THE RECIPIENT AGREES TO INDEMNIFY, DEFEND, AND HOLD HARMLESS TRUTH HARDWARE AND ITS EMPLOYEES AND THEIR SUCCESSORS AND ASSIGNS FROM AND AGAINST ANY AND ALL CLAIMS, SUITS, LOSSES, DAMAGES OR COSTS INCURRED FROM USING THESE DRAWINGS OR ANY CONTENT THEREOF.

Amesbury Truth
Owatonna, MN 55060
Telephone 507-451-5620

THIS DRAWING IS THE PROPERTY OF TRUTH HARDWARE. THE INFORMATION THEREON IS TO BE TREATED AS CONFIDENTIAL. IF IT IS NOT TO BE USED, COPIED OR DISCLOSED TO OTHER PARTIES, PLEASE CONTACT TRUTH HARDWARE.

DRAWN BY: M. NEFF DATE: 10/26/2021
CHECKED BY: MDN SCALE: 1:4
PARTNAME: ENCORE SINGLE ARM AWNING OPERATOR

PROFILE: GENERIC PVC
DRAWING NO.: 21257F
REVISION: A
TITLE: E